

## IMPORTANT INFORMATION

- Constant, competent adult supervision is required when children are playing near water.
- Disconnect the hose after use. Do not store the unit connected to the hose.
- Thoroughly dry the unit before storing. Store out of direct sunlight.



AGES 2-5 YEARS

SKU: 645815PC

ADULT ASSEMBLY AND SUPERVISION REQUIRED

## CONTENTS

- A. 1 Spinner Platform
- B. 1 Center Base
- C. 1 Pipe
- D. 1 Wheel



Illustrations are for reference only. Styles may vary from actual contents.

Please remove all packaging including tags, ties & tacking stitches before giving this product to a child.

## ⚠ WARNING

- Adult assembly required.
- Adult supervision required. Do not leave children unattended.
- This product is intended for use by children ages 2-5 years.
- Maximum user weight is 50 lbs. (23 kg). Total weight of children must not exceed 100 lbs. (45.5 kg).
- No more than two (2) children should play on the unit at the same time.
- Use this product on a level surface and avoid using near swimming pools, on or near steps, hills or inclines.
- Keep the area around the product clean, and clear of objects, to prevent slips and falls.
- Only use on a grass area. Never use on concrete or hard surfaces.
- Do not allow children to stand or climb on the top of surface. Failure to do so may cause the product to become unstable.
- Intended for use with the supplied accessories only.
- Never use with anything except clean hose water. Use of other liquids may be harmful or damage the unit.
- Do not store or leave hose in product when not in use.
- Keep these instructions for future reference.

## DISPOSAL

- Disassemble and dispose of equipment in such a manner that no hazardous conditions such as, but not limited to, small parts and sharp edges exist at the time equipment is discarded.

## LIMITED WARRANTY

The Little Tikes Company makes fun, high quality toys. We warrant to the original purchaser that this product is free of defects in materials or workmanship for one year \* from the date of purchase (dated sales receipt is required for proof of purchase). At the sole election of The Little Tikes Company, the only remedies available under this warranty will be the replacement of the defective part or replacement of the product. This warranty is valid only if the product has been assembled and maintained per the instructions. This warranty does not cover abuse, accident, cosmetic issues such as fading or scratches from normal wear, or any other cause not arising from defects in material and workmanship. \*The warranty period is three (3) months for daycare or commercial purchasers. U.S.A and Canada: For warranty service or replacement part information, please visit our website at [www.littletikes.com](http://www.littletikes.com), call 1-800-321-0183 or write to: Consumer Service, The Little Tikes Company, 2180 Barlow Road, Hudson OH 44236, U.S.A. Some replacement parts may be available for purchase after warranty expires—contact us for details. Outside U.S.A and Canada: Contact place of purchase for warranty service. This warranty gives you specific legal rights, and you may also have other rights, which vary from country/state to country/state. Some countries/states do not allow the exclusion or limitation of incidental or consequential damages, so the above limitation or exclusion may not apply to you.

Please keep this manual as it contains important information.



© The Little Tikes Company, an MGA Entertainment company. LITTLE TIKES® is a trademark of Little Tikes in the U.S. and other countries. All logos, names, characters, likenesses, images, slogans, and packaging appearance are the property of Little Tikes.  
Printed in China

**Little Tikes Consumer Service**  
2180 Barlow Road  
Hudson, Ohio 44236 U.S.A.  
1-800-321-0183

**MGA Entertainment UK Ltd.**  
50 Presley Way, Crownhill,  
Milton Keynes, MK8 0ES, Bucks, UK  
support@littletikesstore.co.uk  
Tel: +0 800 521 558

**MGA Entertainment (Netherlands) B.V.**  
Baronie 68-70, 2404XG Alphen a/d Rijn,  
The Netherlands  
Tel: +31 (0) 172 758038  
E-mail: klantenservice@mgaee.com

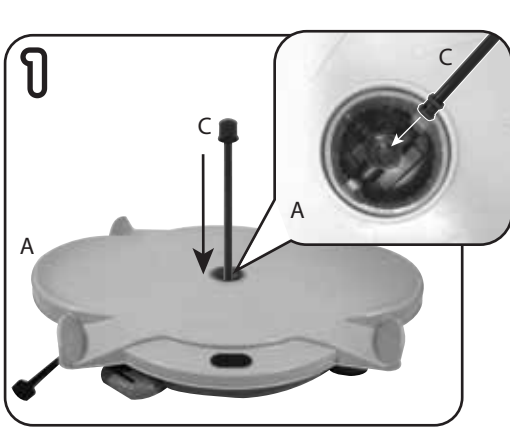
**Imported by MGA Entertainment Australia Pty Ltd**  
Suite 2.02, 32 Delhi Road  
Macquarie Park NSW 2113  
1300 059 676



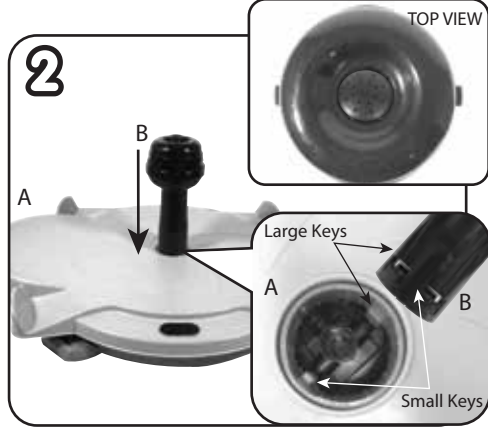
[www.littletikes.com](http://www.littletikes.com)  
[www.littletikes.co.uk](http://www.littletikes.co.uk)  
[www.littletikes.com.au](http://www.littletikes.com.au)

## ASSEMBLY

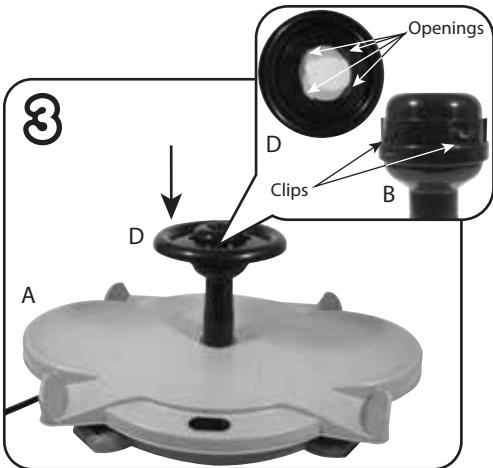
Before beginning, protect the play area from possible water damage.



Attach the pipe (C) into the center opening of the spinner platform (A).



Place the center base (B) over the pipe and insert it into the center opening of the spinner platform (A). Make sure the pipe goes through the opening on top of the base before locking it in place. The platform and the base are keyed. Align the small and large keys on the base with the keys on the platform. Once it is snapped in place, you won't be able to disassemble.



Snap the wheel (D) to the top of the center base (B). For correct assembly, align the four clips around the base with the openings of the wheel. Once you snap the wheel, you won't be able to disassemble.



Secure the hose through the opening on the bottom of the spinner platform (A) so it sits flat on the floor. Then, attach a garden hose (not included) to the hose on the platform. Twist the connector piece clockwise until it is securely attached to the hose.

## GAME PLAY

1. Two players will sit opposite from each other with their feet placed on the footrests.
  2. With both hands on the wheel, begin turning in either direction to make the platform spin (Fig.1).
  3. Control the jets with the wheel. Push the wheel down and the water will spray from the sides (Fig. 2). Pull up and the water will spray from the top of the wheel (Fig. 3).
- NOTE: Only use the water jets when playing outdoors.  
After playing, turn off the hose and detach it from the unit.

