

little tikes®

622243

XIM622243 - 4/11

www.littletikes.com

ENGLISH

TOTSPO RTS™ ATTACH 'N PLAY™ BASKETBALL

Ages 2 years and up  
Please save sales receipt for proof of purchase.

ADULT ASSEMBLY REQUIRED.

⚠ WARNING:

- Keep these instructions for future reference.
- This product is for indoor use only and should be used on interior doors only.

CONSUMER SERVICE

TOLL-FREE NUMBER:

United States:  
www.littletikes.com  
1-800-321-0183  
Monday - Friday  
The Little Tikes Company  
2180 Barlow Road  
Hudson, OH 44236

Printed in China. D.R. ©2011 The Little Tikes Company  
© The Little Tikes Company, an MGA Entertainment company. LITTLE TIKES® is a trademark of Little Tikes in the U.S. and other countries. All logos, names, characters, likenesses, images, slogans, and packaging appearance are the property of Little Tikes. Please keep this address and packaging for reference since it contains important information. Contents, including specifications and colors, may vary from photos depicted on package. Instructions included. Please remove all packaging including tags, ties & tacking stitches before giving this product to a child.

LIMITED WARRANTY

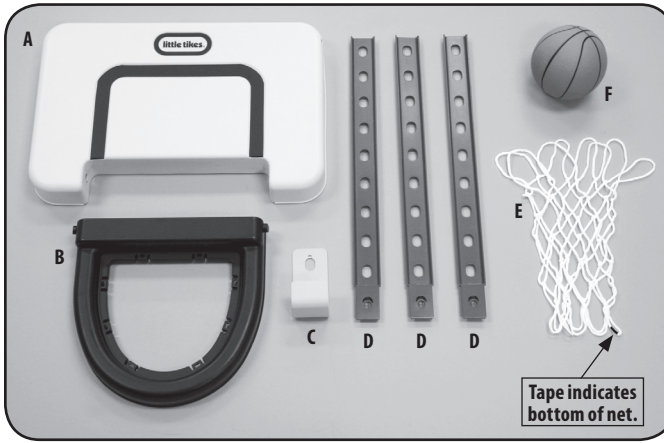
The Little Tikes Company makes fun, high quality toys. We warrant to the original purchaser that this product is free of defects in materials or workmanship for one year\* from the date of purchase (dated sales receipt is required for proof of purchase). At the sole election of The Little Tikes Company, the only remedies available under this warranty will be either replacement of the defective part of the product or refund the purchase price of the product. This warranty is valid only if the product has been assembled and maintained per the instructions. This warranty does not cover abuse, accident, cosmetic issues such as fading or scratches from normal wear, or any other cause not arising from defects in material and workmanship. \*The warranty period is three (3) months for daycare or commercial purchasers.

**U.S.A and Canada:** For warranty service or replacement part information, please visit our website at www.littletikes.com, call 1-800-321-0183 or write to: Consumer Service, The Little Tikes Company, 2180 Barlow Road, Hudson, OH 44236, U.S.A. Some replacement parts may be available for purchase after warranty expires—contact us for details.

**Outside U.S.A and Canada:** Contact place of purchase for warranty service. This warranty gives you specific legal rights, and you may also have other rights, which vary from country/state to country/state. Some countries/states do not allow the exclusion or limitation of incidental or consequential damages, so the above limitation or exclusion may not apply to you.

Please keep this manual as it contains important information.

Adult Assembly Required. No tools needed.



- A. Backboard
- B. Rim
- C. Door hanger
- D. Support track (3)
- E. Net
- F. Basketball

Net Attachment



Start underneath the rim. Start with the top of the net. Thread net-loop through hole in notch as shown. Bottom of net is indicated by a piece of tape.



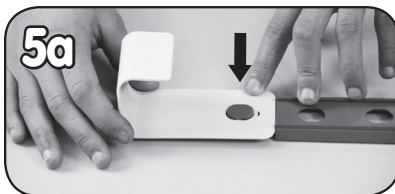
Pull net-loop down and underneath the notch.



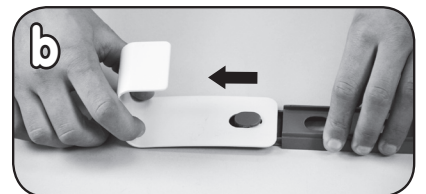
Pull on net to tighten loop.



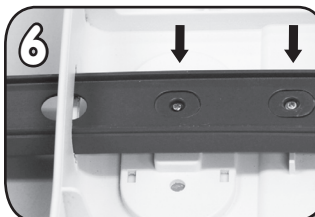
Repeat for 7 other notches.



Press door hanger onto track until it snaps.

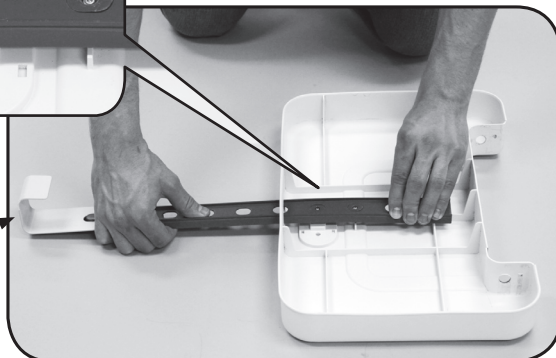


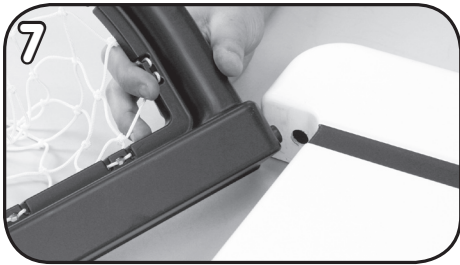
Pull door hanger forward.



Insert the track through the opening located on top of the backboard. Align track holes to disks on the back of backboard. Press down until you hear it snap.

Be sure door hanger is facing to the back of the backboard as shown.



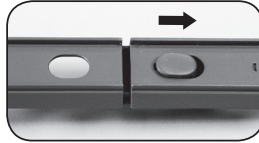
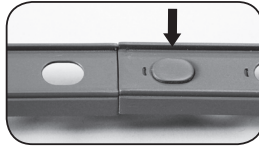


7  
Place locking peg into hole on left side of basketball rim as shown.



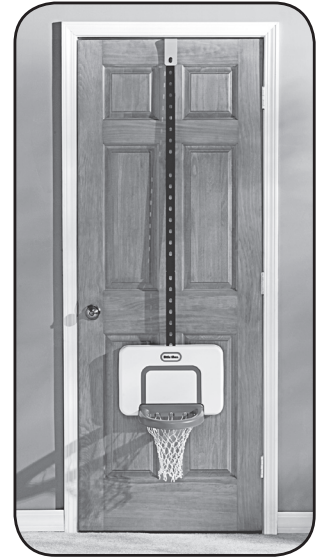
Rotate rim into backboard to secure opposite locking peg in place.

## 8 Lengthen basketball backboard



To lower the backboard, lengthen by adding additional support track.

Snap piece 1 of track to a 2nd piece of track by aligning track holes to opening. Press down and then pull forward to secure.



Breakaway rim - stores flat.